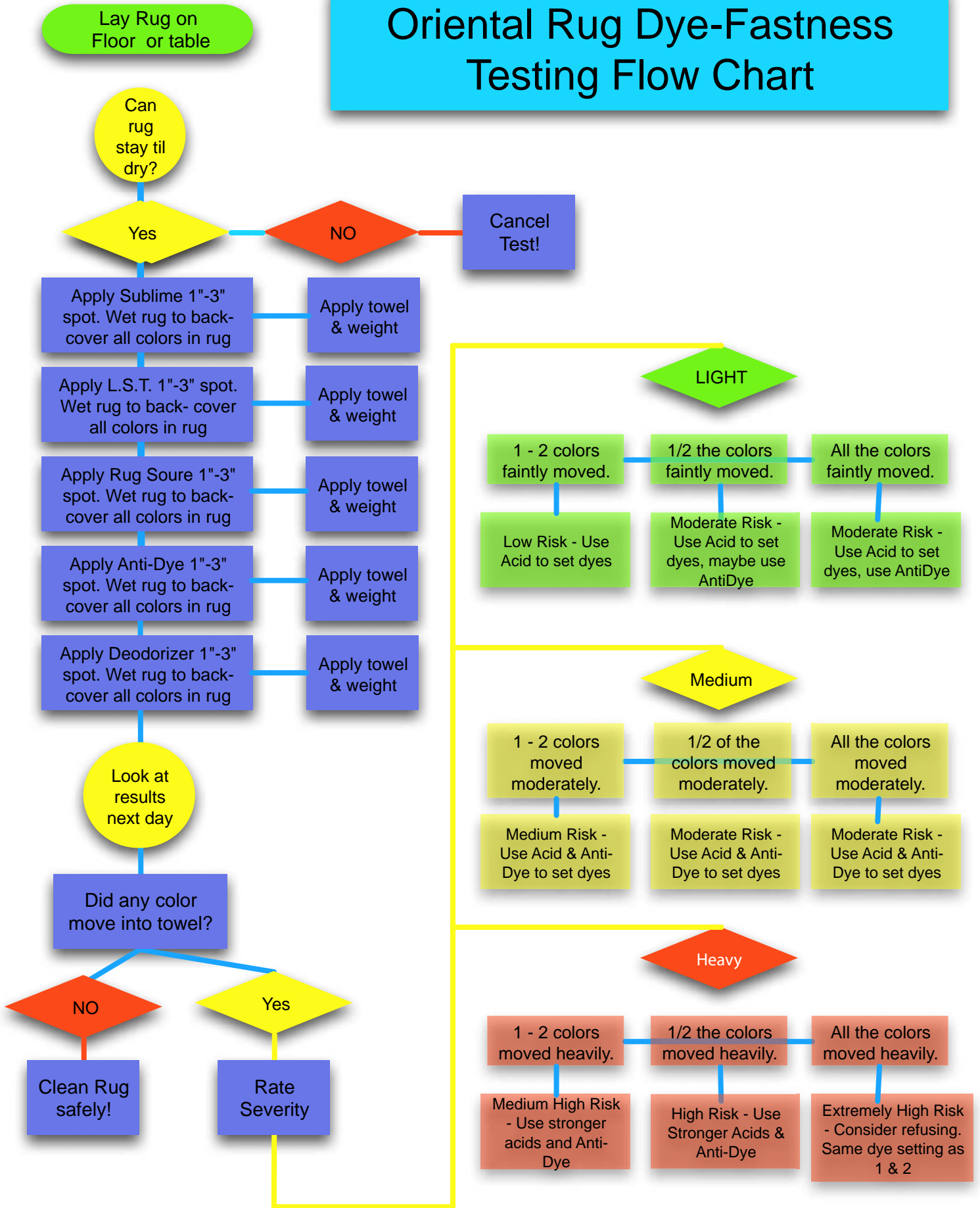


Oriental Rug Dye-Fastness Testing Flow Chart



Alameda Carpet & Upholstery Cleaners Inc.

Portland (503) 335-3915 ♦ Vancouver (360) 906-0080 ♦ www.alamedacleaners.com

Oriental Rug Dye-Fastness Testing Flow Chart

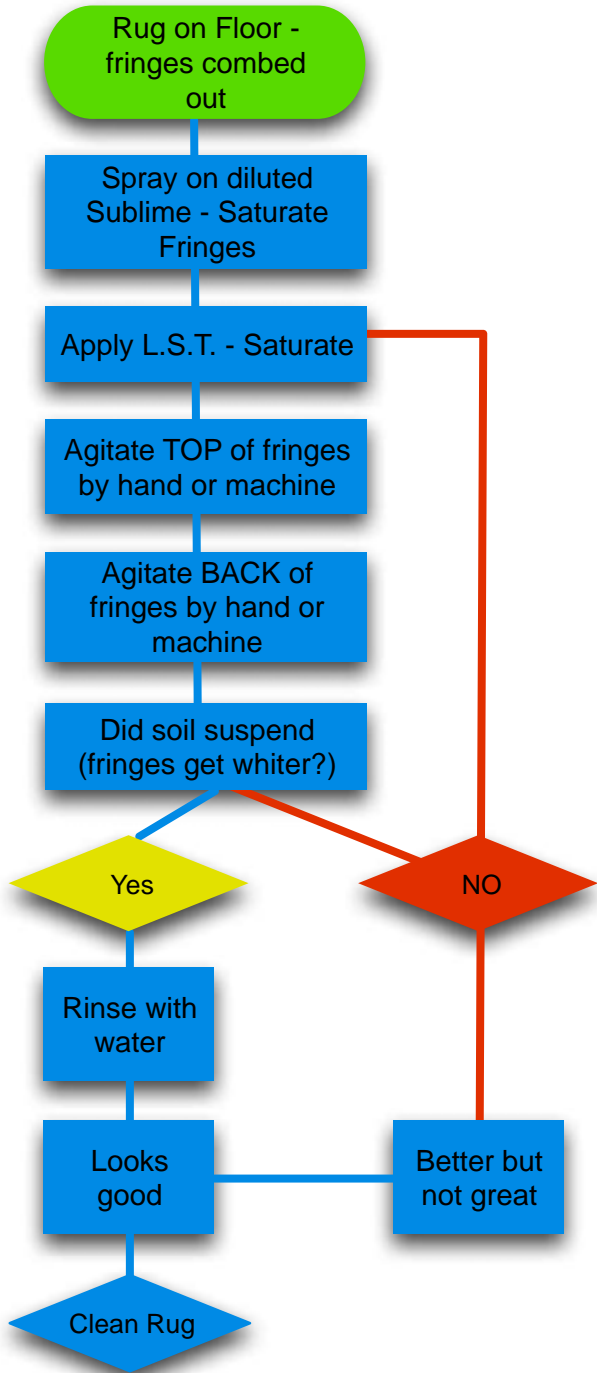
Chemistry Used For Dye-Fastness Test

1. Sublime - Dilute Sublime 6oz. per gallon of room temperature water . Separates after sitting 5 minutes, stir before using, shake each time before using.
2. L.S.T. - Dilute L.S.T. 6oz. per gallon of room temperature water . Separates after sitting 5 minutes, stir before using.
3. Water - Room temperature water .
4. Acid - Diluted at 1:8 ratio with room temperature water .
5. Anti-Dye - Mix 1:20 or 6 oz. per gallon. Separates after sitting 5 minutes, stir before using.
5. Need white cotton towels or paper towels
6. Need 16 oz. (approx.) weight. 4"X4"X4" wood block does well.

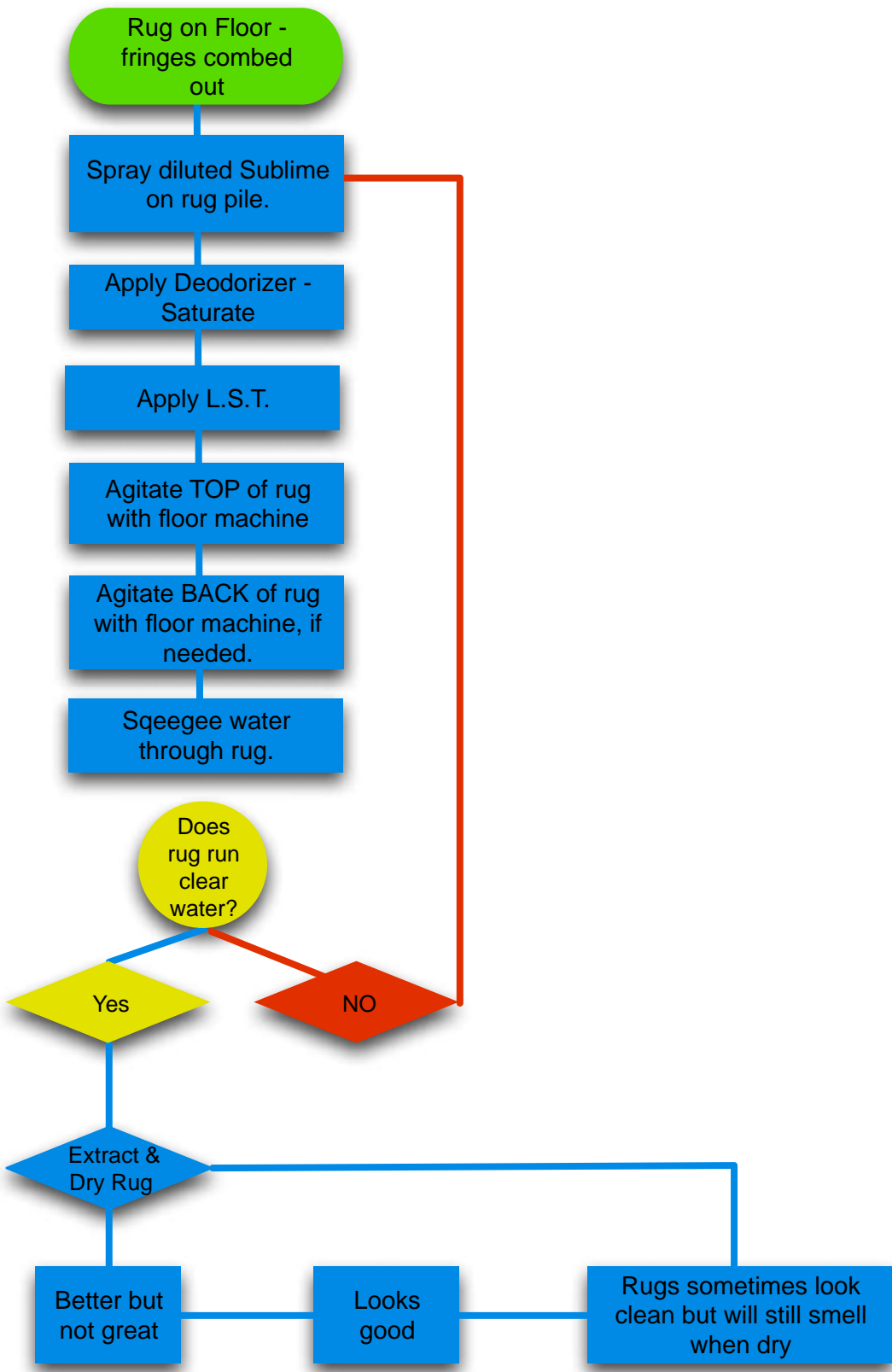
Oriental Rug Fringe Cleaning Flow Chart

Chemistry Used

1. Sublime - Dilute Sublime 6oz. per gallon of warm or hot water . Some separation occurs after sitting for a few minutes, shake each time before using.
2. L.S.T. - Dilute L.D.T. 6oz. per gallon of room temperature water . Some separation occurs after sitting for a few minutes, stir each time before using.
3. Water - Spray from a pressurized hose if possible. Be careful to watch for fragile fringes. Water pressure may cause damage.



Oriental Rug Cleaning Flow Chart



Alameda Carpet & Upholstery Cleaners Inc.

Portland (503) 335-3915 ♦ Vancouver (360) 906-0080 ♦ www.alamedacleaners.com

Chemistry For Oriental Rug Cleaning Flow Chart

Chemistry Used For Rugs

1. Sublime - Dilute Sublime 6oz. per gallon of warm or hot water . Separates after sitting 5 minutes, stir before using, shake each time before using.
2. L.S.T . - Dilute L.D.T . 6oz. per gallon of room temperature water . Some separation occurs after sitting for a few minutes, stir each time before using.
3. Deodorizer - 1:320 dilution ratio. 2 oz. per 5 gallon pail. Make as needed. Not good after 24 hours. Apply liberally , saturate rug from top to bottom.
4. Water - Spray from a pressurized hose if possible. Be careful to watch for fragile fringes. Water pressure may cause damage.
5. Acid - 1:8 dilution ratio, or 14 oz's per gallon. Dilute Rug Soure with room temperature water .
6. Anti-Dye - 32oz. per 5 gallons. Mix with room temperature water . Stir well, some solids will remain in bottom of bucket. Separates after sitting 5 minutes, stir before using. Can go 48-96 oz. per 5 gallons for extreme situations.

Chemistry Useage

1. Sublime - Sublime should be sprayed from a 04 - 06 Tee-Jet spray tip. Sprayer should be at 60 p.s.i. Cover at approximately 1/2 gallon per 80 sq. ft.
2. Deodorizer - 1:320 dilution ratio. 2 oz. per 5 gallon pail. Make as needed. Not good after 24 hours. Apply liberally , saturate rug from top to bottom.
3. L.S.T . - Should be applied after Deodorizer . Use a 32 oz. of 64 oz. measuring cup, stir L.S.T . before using, and pour on top of already wet rug. Coverage should be approximately 1/2 - 1 gallon per 70-80 sq. ft. depending on soil level and rug density .
4. Water - Spray from a pressurized hose if possible. Be careful to watch for fragile fringes. Water pressure may cause damage.
5. Acid - Should be sprayed on top of rug from 04-06 Tee-Jet spray tip. Sprayer should be at 60 p.s.i. Coverage should be 1/4 - 1/2 gallon per 70-80 sq. ft.
6. Anti-Dye - . Pour directly on bleeding rug. Do not apply to excess and allow to run off rug. Spread around with squeegee. After 2-3 minutes squeegee off and re-apply . Rinse dye with water and repeat until rug stops bleeding.

Alameda Carpet & Upholstery Cleaners Inc.

Portland (503) 335-3915 ♦ Vancouver (360) 906-0080 ♦ www.alamedacleaners.com